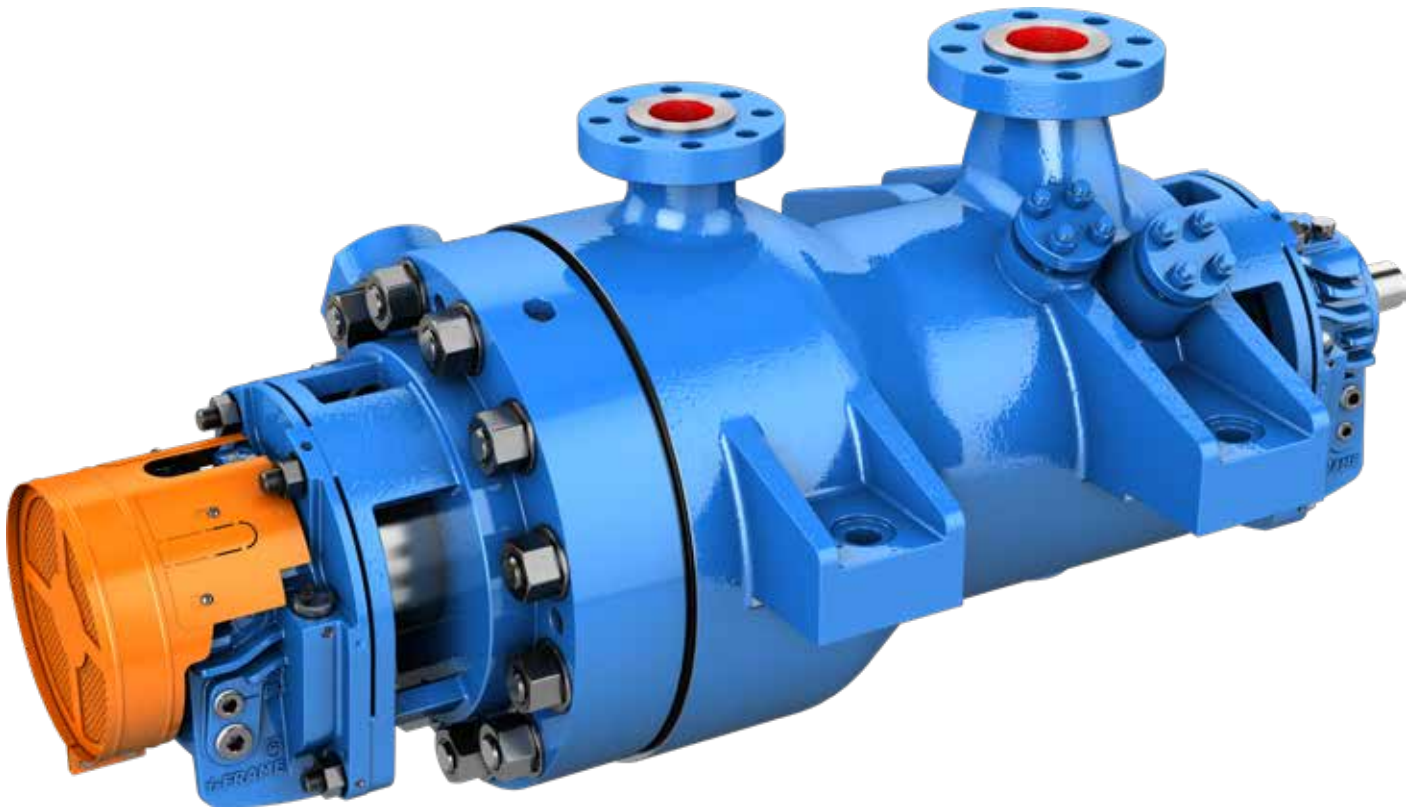


# 7200SB/CB

Double-Casing, Radially Split, Multistage Between-Bearings Pump (API 610, BB5)

---



With an extensive global installed base, coupled to our engineering expertise and production capabilities, we are a proven leader in delivering API pump solutions.

**Applications covered are:**

- Refineries
- Remote pipeline
- Descaling
- Mine dewatering
- Process transfer
- CO2 transport and injection
- Water injection



# Features

## 1. ROBUST CASING DESIGN

- Radially split to maximize pressure capacity
- Centerline mounting to support extreme temperatures
- Complete cartridge withdrawal capability on CB

## 2. PRECISION CAST IMPELLERS

- Investment cast to maximize hydraulic efficiency
- Double suction for low NPSH applications
- Designed to minimize axial loading with balance drum
- Balanced to ISO Grade 2.5 as standard

## 3. PATENTED BEARING OIL FILTRATION

- Oil filtration feature as standard on self-contained oil lubricated bearings
- Remove moisture / debris from oil, extending operating time and maximizing reliability
- Filter can be changed without equipment shut down for ease of maintenance

## 4. BEARINGS

- Anti-friction bearings as standard
- Options for anti-friction / hydrodynamic or complete hydrodynamic depending on load and requirements

## 5. FLANGE CONFIGURATIONS

- Top-Top flange locations as standard
- Class 900, 1500 & 2500 available with options for either RF or RTJ facings

## 6. SEAL CHAMBERS

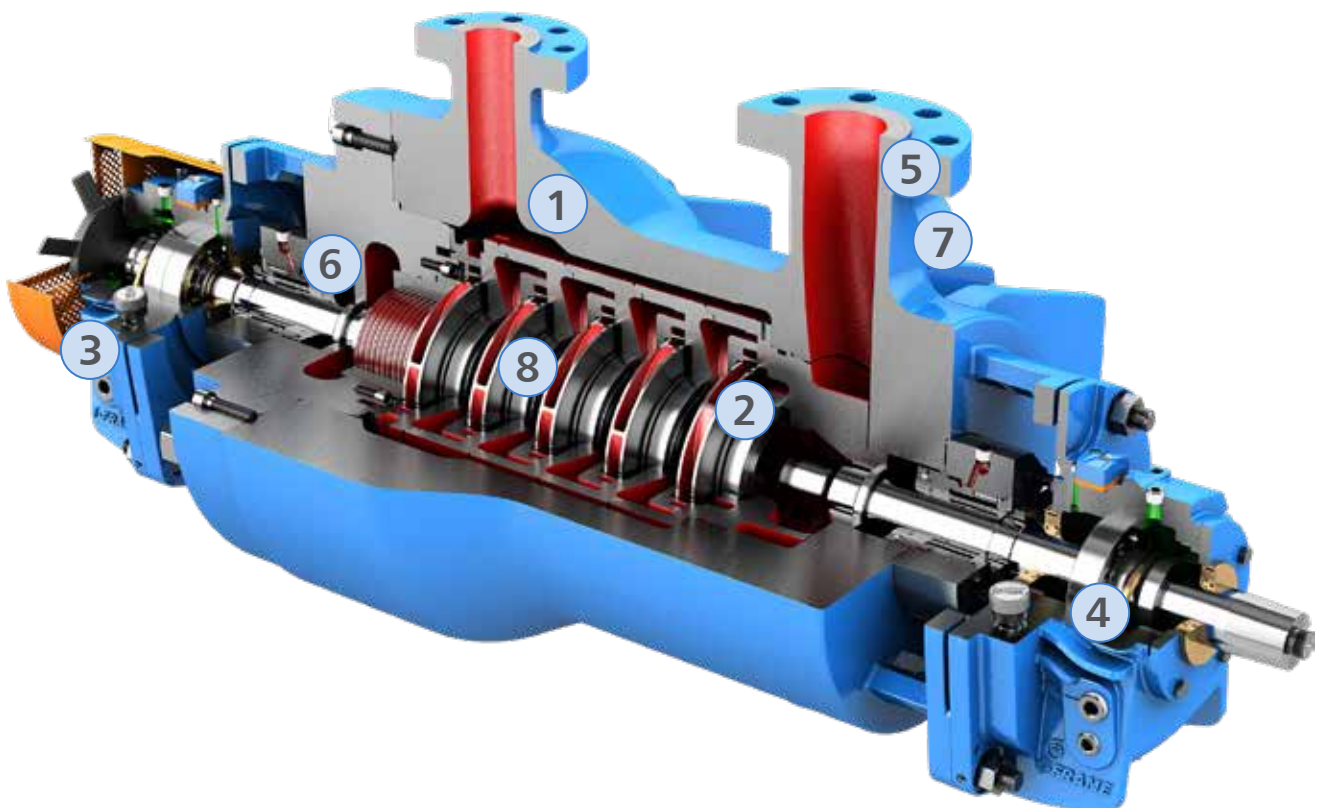
- Conforms to API 610 dimensional requirements, facilitating ease of maintenance
- Wide range of API 682 cartridge mechanical seals available to meet specific service conditions

## 7. INTEGRALLY FLANGED CASING CONNECTIONS

- Improved casing integrity - no need for pipe welding and gusseting

## 8. WEAR RINGS

- Integral impeller wear surfaces as standard with option for wear rings
- Clearances in accordance with API 610 with reduced clearance option for higher efficiency
- Non-metallic material options available



# Patented Bearing Oil Filtration

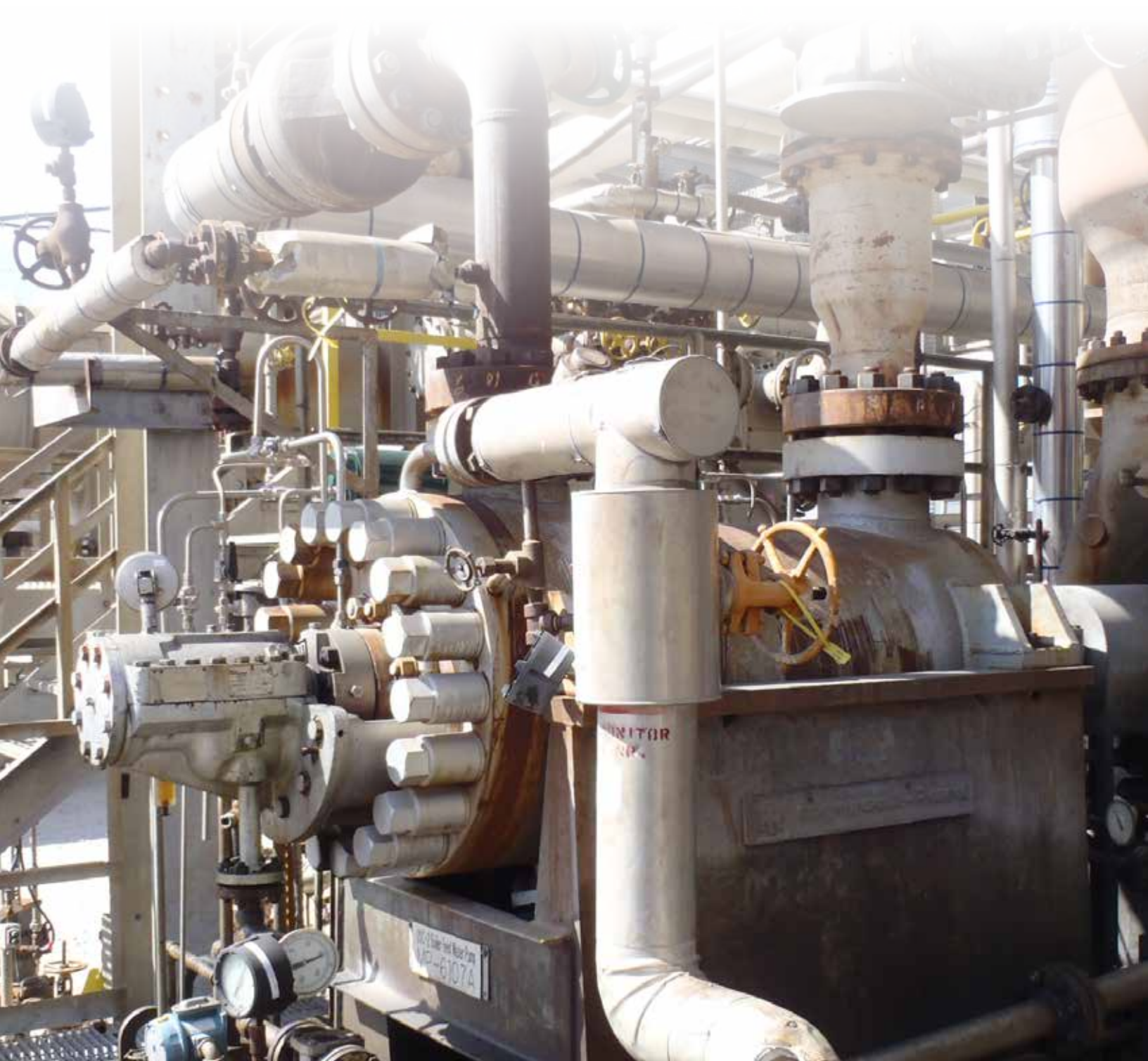
Our patented bearing oil filtration capability is unique in the pump industry.

An oil filter is located in the bearing housing of self-contained oil lubricated configurations, removing debris and moisture during operation, maintaining the cleanliness of the oil. Doing so provides clean lubrication to lower bearing temperatures and bearing wear which increases bearing life whilst increasing the time between oil changes.

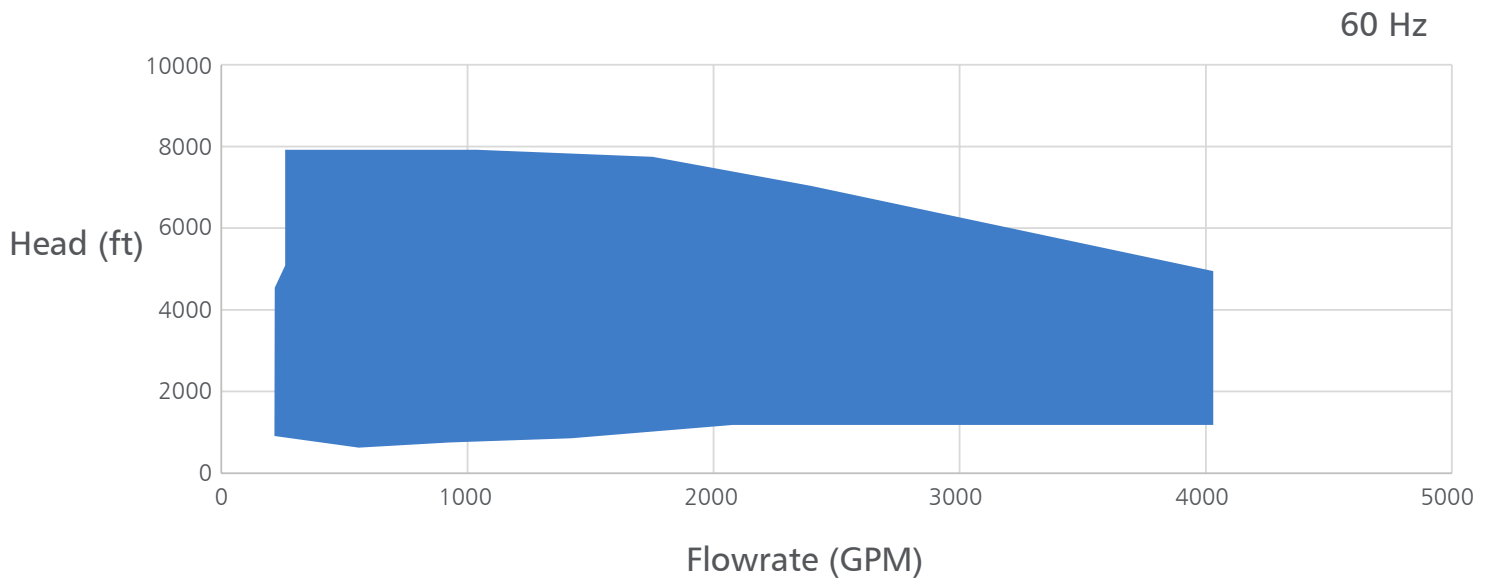
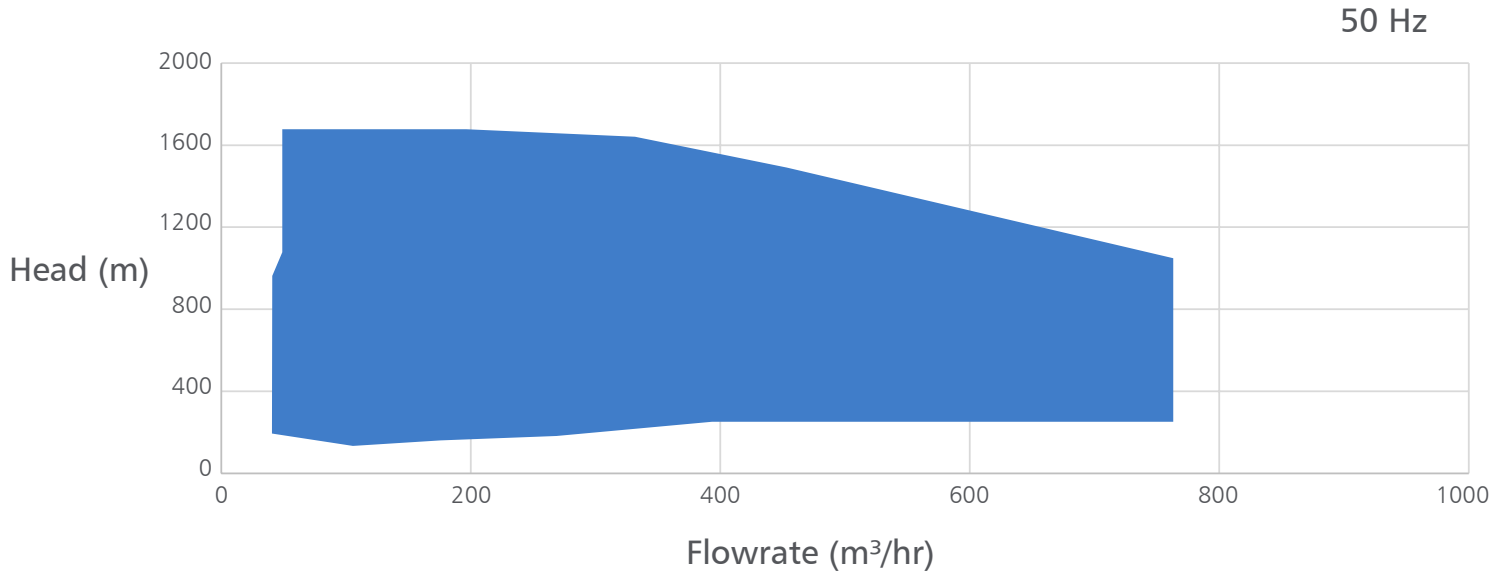
The design allows for easy filter changeover which can be done when the pump is running – no need to stop the process.



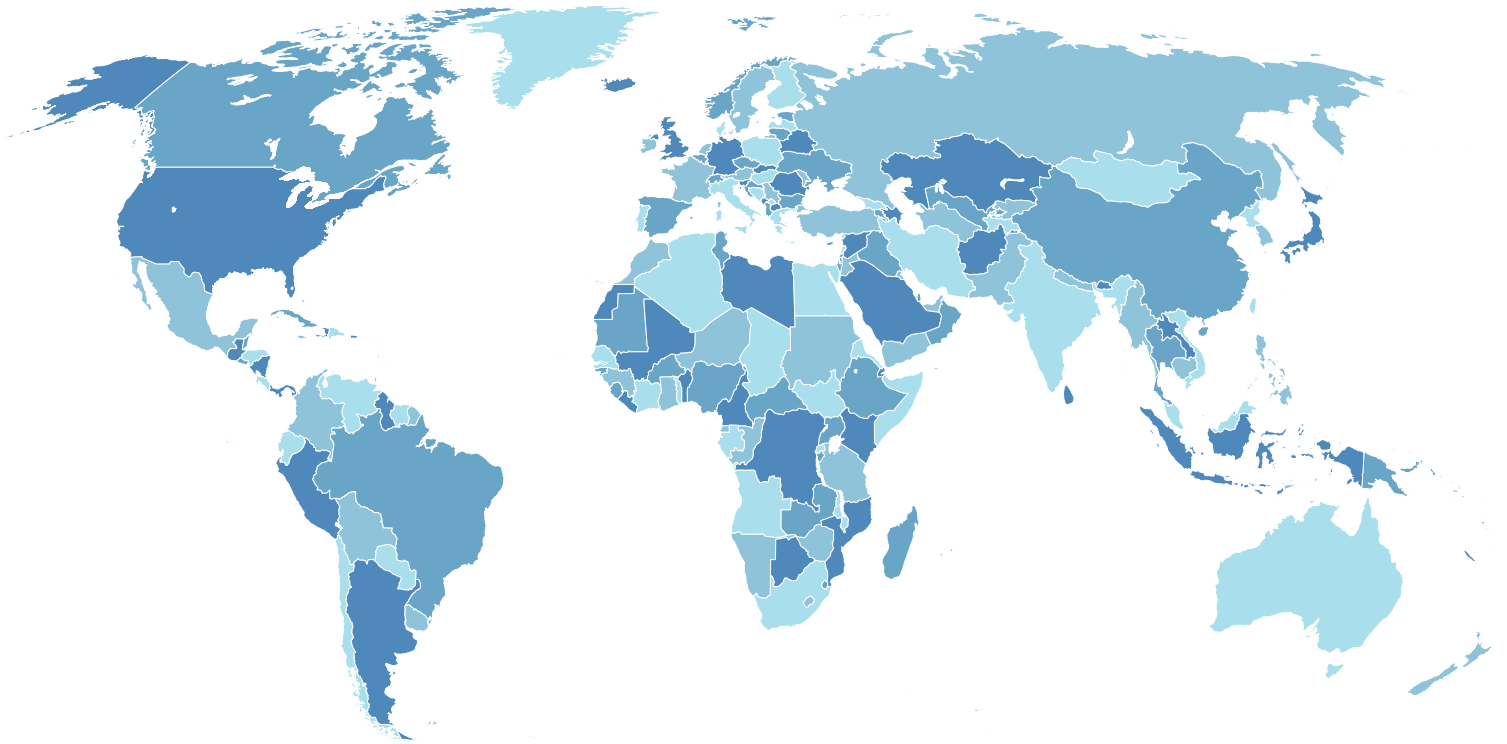
Remote locations and arduous environments, the  
Goulds Model 7200SB/CB is built to handle the most  
challenging services.



# Hydraulic Coverage



Higher heads and flows are available on request.



Visit [www.ittproservices.com](http://www.ittproservices.com) & [www.goulds pumps.com](http://www.goulds pumps.com) to find nearest service, sales, and manufacturing locations



————— An ITT Brand

240 Fall Street  
Seneca Falls, NY 13148  
Phone: 315.568.2811  
Fax: 315.568.2418  
[www.gouldspumps.com](http://www.gouldspumps.com)

© 2024 ITT Goulds Pumps Inc.

B.7200SBCB.en-US.2024-11