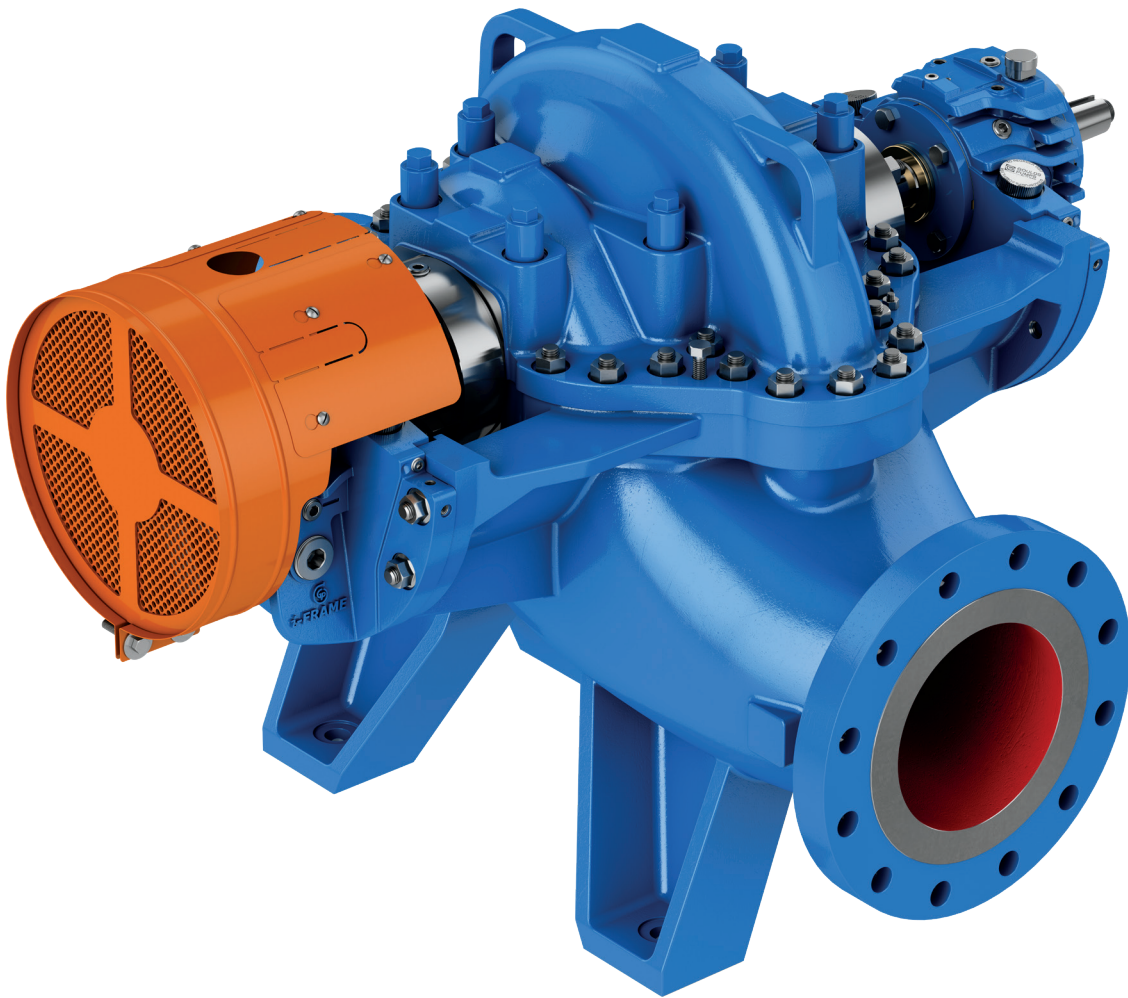


3610

Axially Split, One and Two-Stage Between-Bearings Pump (API 610, BB1)



With an extensive global installed base, coupled to our engineering expertise and production capabilities, we are a proven leader in delivering API pump solutions.

Applications covered are:

- Petroleum refining, production, and distribution
- Petrochemical and demanding chemical processing
- High temperature applications including boiler circulation
- General industrial requiring high temperature or high pressures



Features

1. ROBUST CASING DESIGN

- Dual volute design to maximise reliability
- Split flange nuts located on top for ease of maintenance

2. PRECISION CAST IMPELLERS

- Double suction for low NPSH applications
- Designed to minimize axial loading
- Balanced to ISO Grade 2.5 as standard

3. PATENTED BEARING OIL FILTRATION

- Oil filtration feature as standard on self-contained oil lubricated bearings
- Remove moisture / debris from oil, extending operating time and maximizing reliability
- Filter can be changed without equipment shut down for ease of maintenance

4. BEARINGS

- Anti-friction bearings as standard
- Options for anti-friction / hydrodynamic or complete hydrodynamic depending on load and requirements

5. FLANGE CONFIGURATIONS

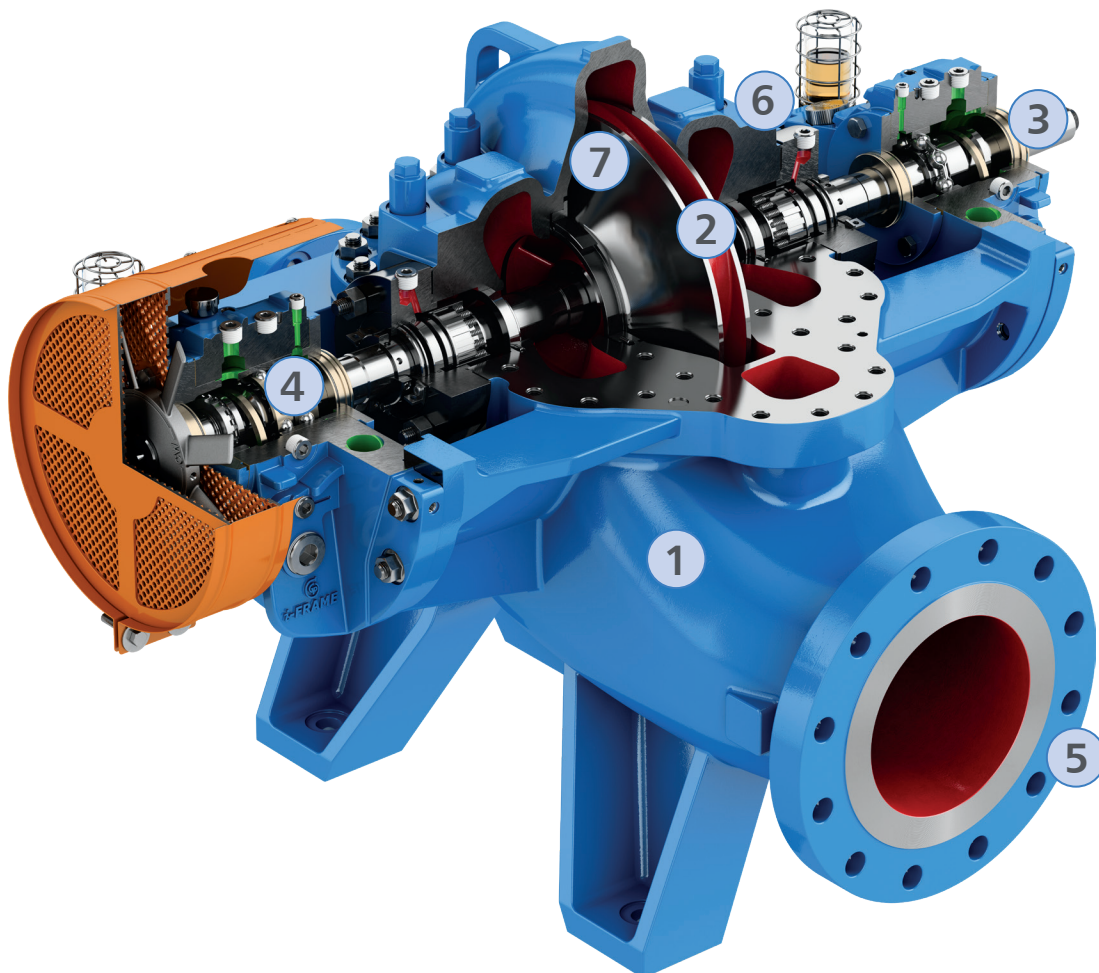
- Side-Side flange locations as standard
- Class 300 as standard with options for either RF or RTJ facings

6. SEAL CHAMBERS

- Conforms to API 610 dimensional requirements, facilitating ease of maintenance
- Wide range of API 682 cartridge mechanical seals available to meet specific service conditions

7. WEAR RINGS

- Integral impeller wear surfaces as standard with option for wear rings
- Clearances in accordance with API 610 with reduced clearance option for higher efficiency
- Non-metallic material options available

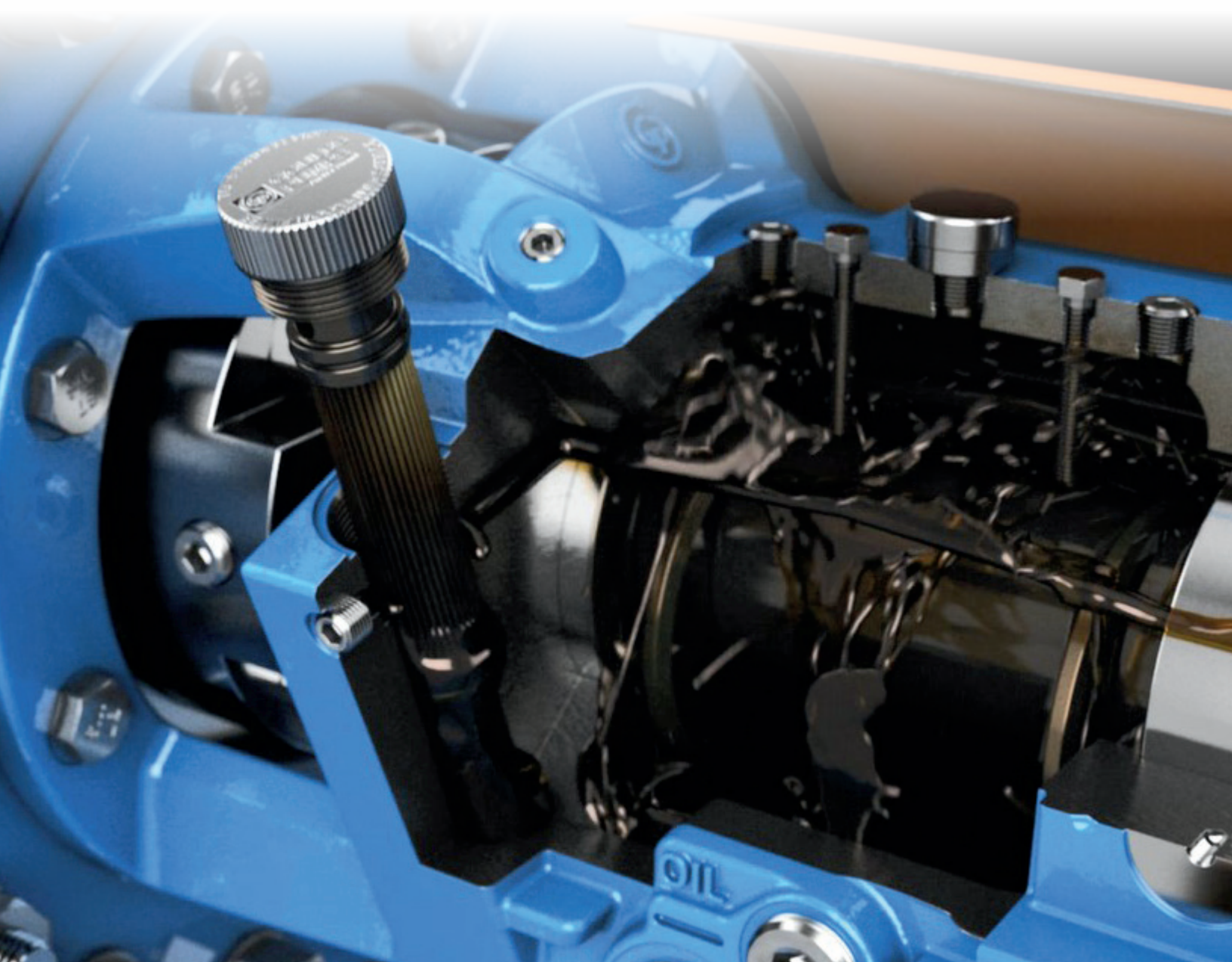


Patented Bearing Oil Filtration

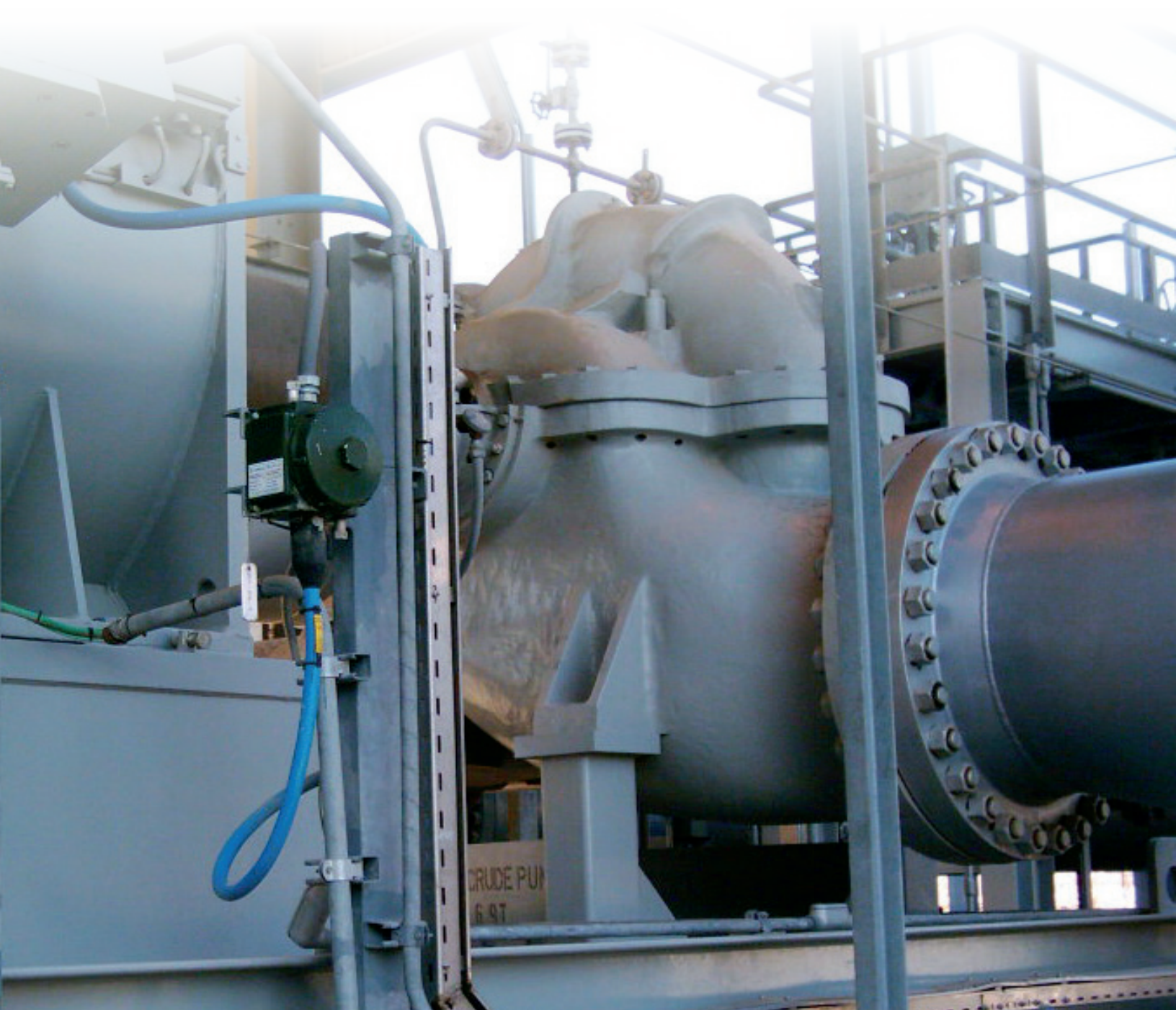
Our patented bearing oil filtration capability is unique in the pump industry.

An oil filter is located in the bearing housing of self-contained oil lubricated configurations, removing debris and moisture during operation, maintaining the cleanliness of the oil. Doing so provides clean lubrication to lower bearing temperatures and bearing wear which increases bearing life whilst increasing the time between oil changes.

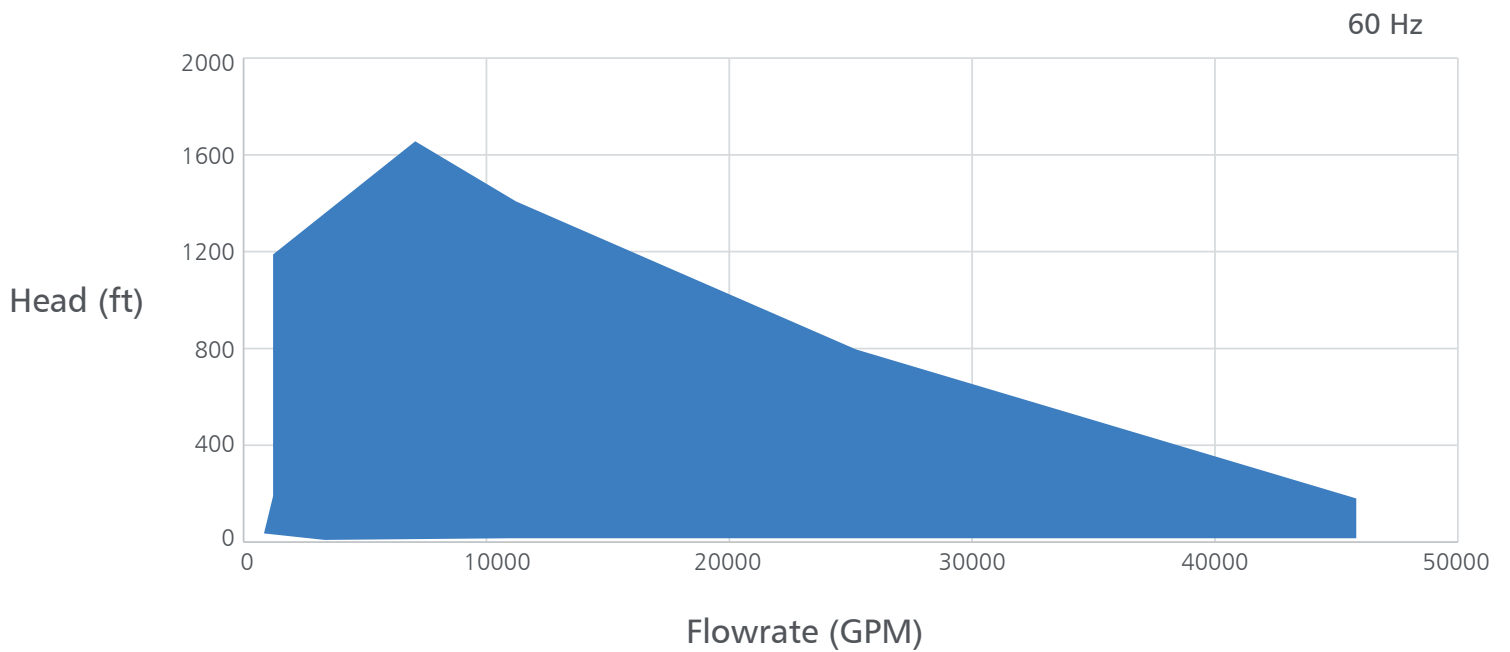
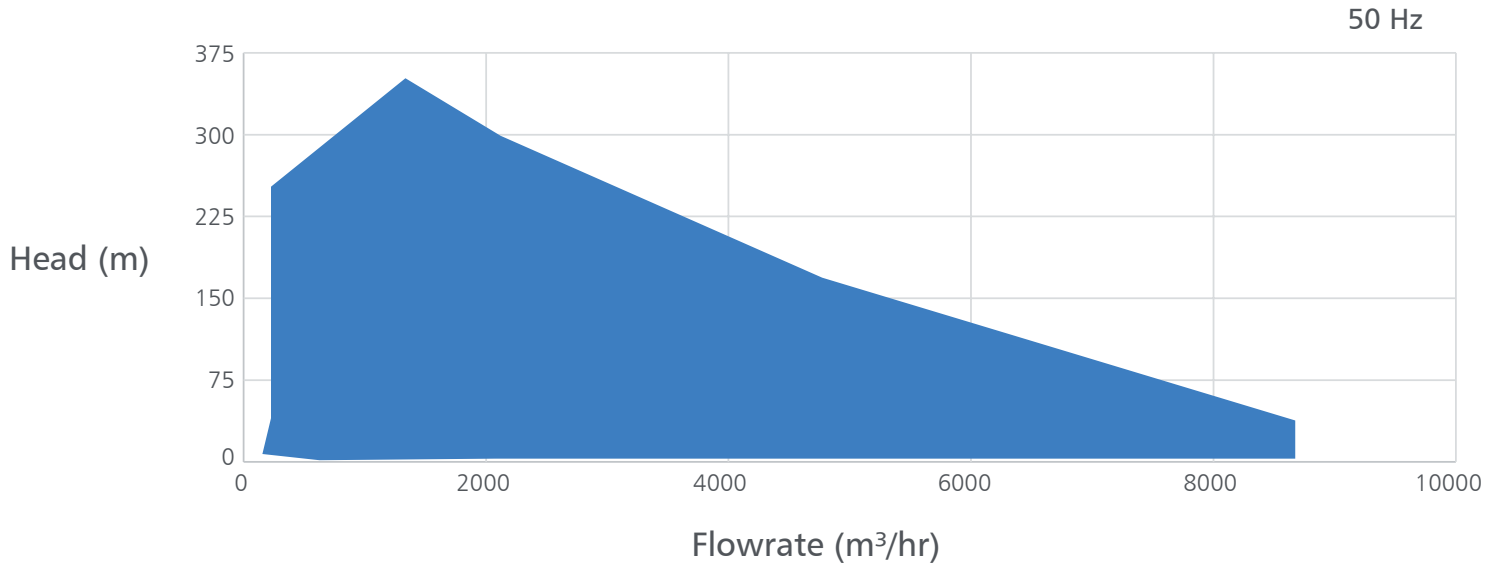
The design allows for easy filter changeover which can be done when the pump is running – no need to stop the process.



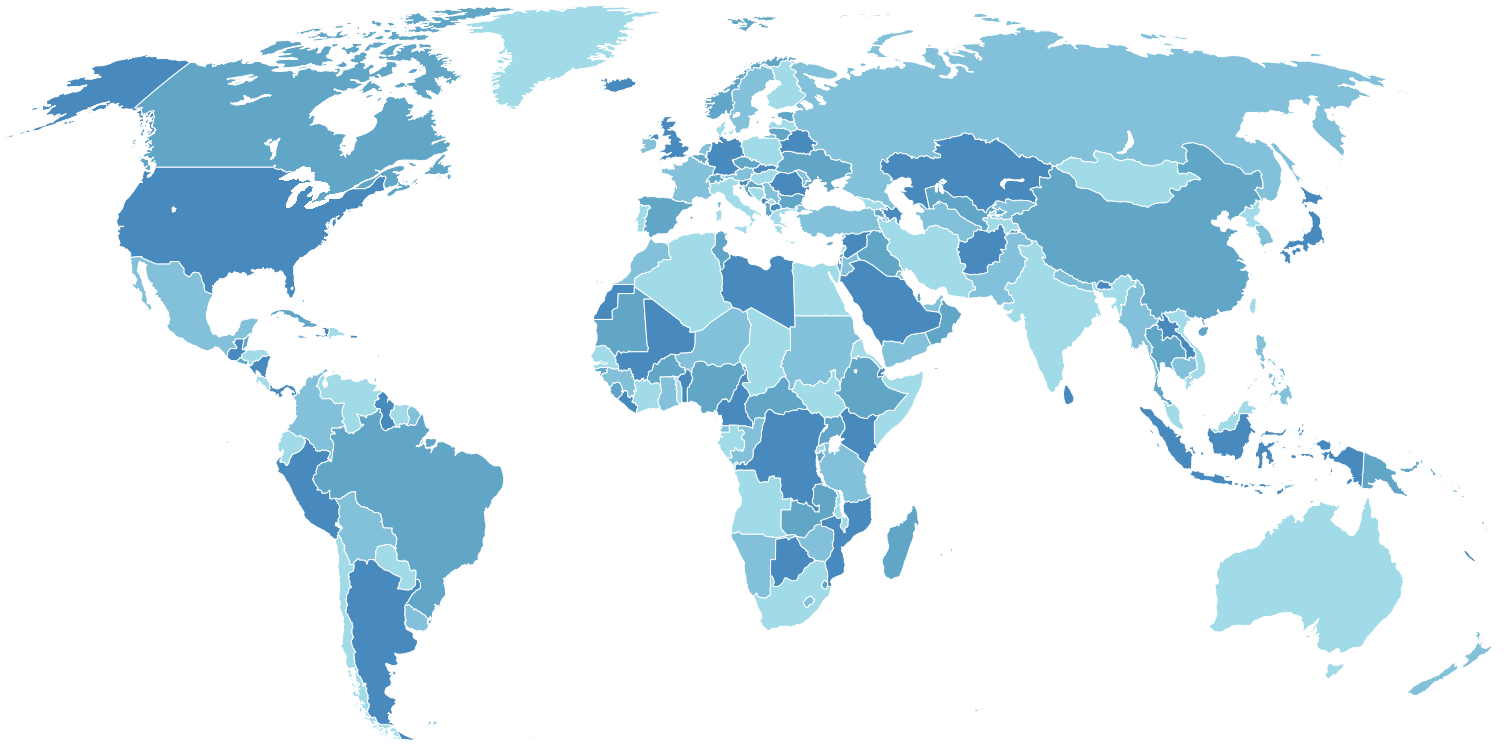
Remote locations and arduous environments, the
Goulds Model 3610 is built to handle the most
challenging services.



Hydraulic Coverage



Higher heads and flows are available on request.



Visit www.ittproservices.com & www.goulds pumps.com to find nearest service, sales, and manufacturing locations



————— An ITT Brand

240 Fall Street

Seneca Falls, NY 13148

Phone: 315.568.2811

Fax: 315.568.2418

www.gouldspumps.com

© 2025 ITT Goulds Pumps Inc.

B.3610.en-US.2025-09